

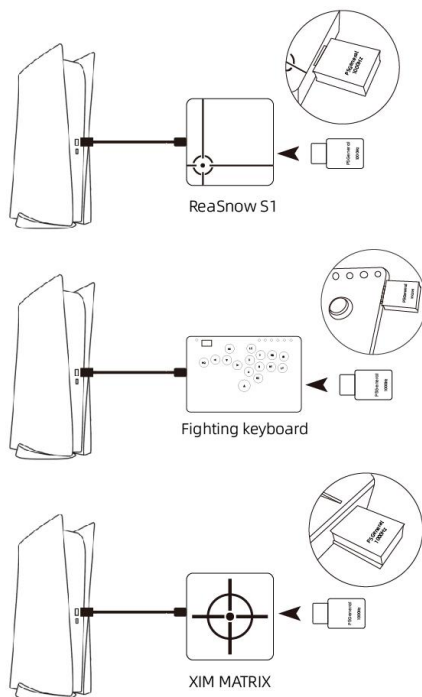
Besavior P5general Instruction Manual

1. Product Introduction

The Besavior P5 General can be used immediately by plugging it into the USB female port of the target peripheral device (such as the Raspberry Pi GP2040-CE fighting keyboard, Reasnow, etc.). Before using the target peripheral device connected to the PS5 console via USB, please enable the USB connection function of the PS5 console:



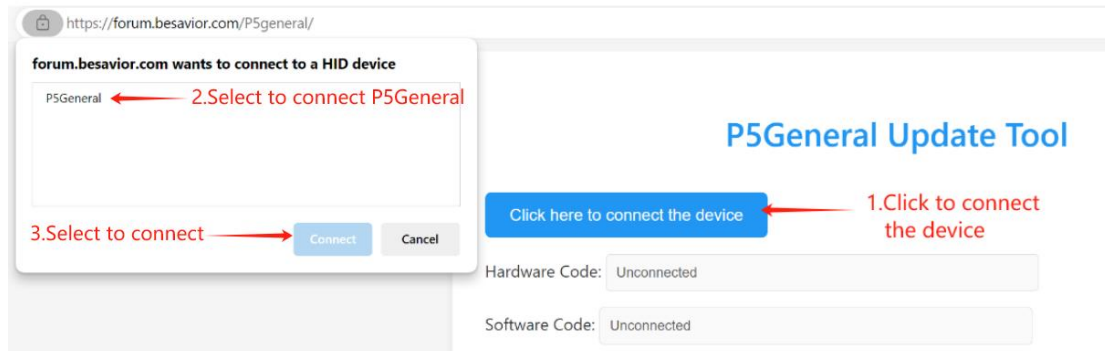
2. The connection diagram is as follows:



3. P5General Firmware Upgrade Method

A: Plug the P5General into the USB port of a Windows PC, then open it using the Microsoft Edge browser

Go to the link: <https://forum.besavior.com/P5general>, and follow the steps in the diagram below :



B: Access the official forum at forum.besavior.com to download the required

P5General update firmware, [Click here to enter](#)

C: Select the downloaded update firmware and click "Update"

