

# Besavior Edge Stick User Manual

## 1. Product Introduction

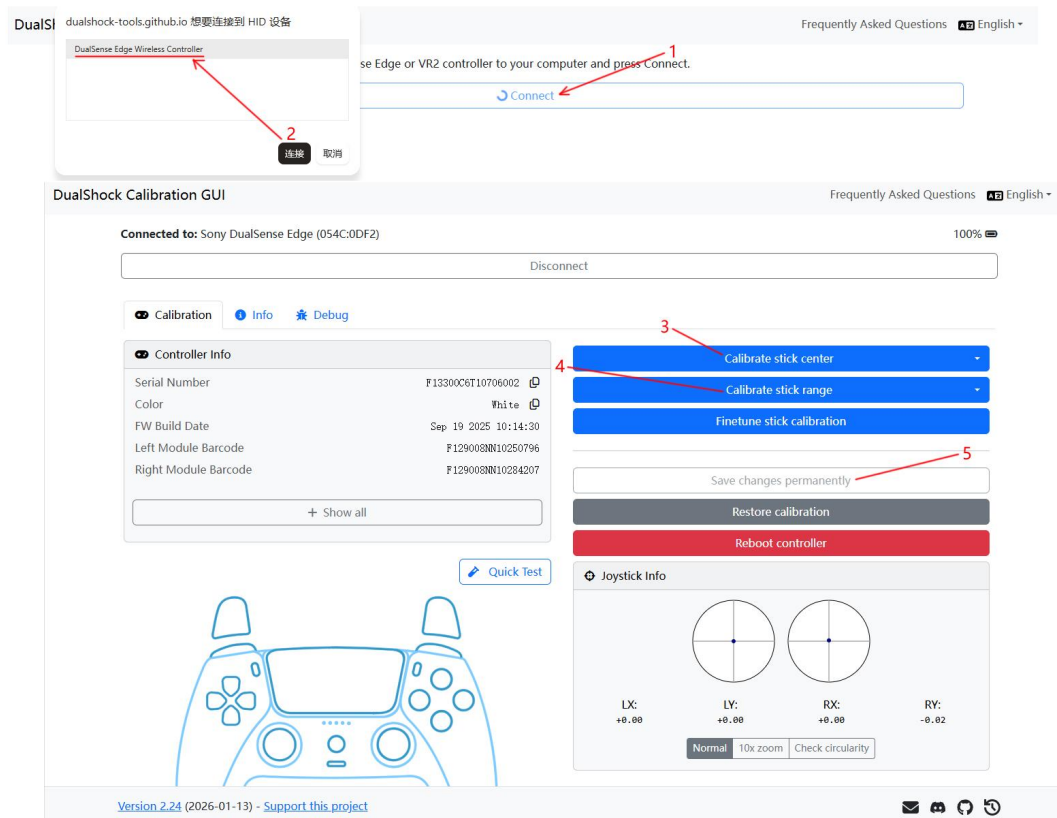
The installation and use of the Besavior Edge Stick are fully same as the original official edge stick.

## 2. Joystick Calibration

If you find the center dead zone and edge dead zone of the joystick are not satisfactory, you can calibrate the joystick using a commonly used web-based calibration method as follows:

- A. Make sure the elite stick is inserted into the elite controller and the controller works normally.
- B. Use a popular PS5 joystick calibration webpage (the following webpage is used as an example; other webpages use similar methods).

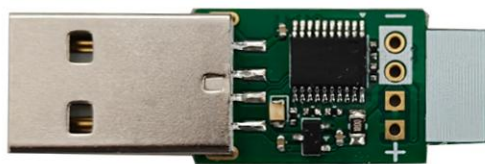
Open <https://dualshock-tools.github.io/> with Microsoft Edge browser, and calibrate the joystick according to the diagram below:



### 3. Behavior Edge Stick Upgrade

The product package includes an update tool board (as shown in the image below).

Updating is generally unnecessary. If needed, please visit [the official forum](#) and follow the tutorial to upgrade.



Behavior Edge Stick Update Tool